

COLLEGE STATION ISD

Plan 1 Intermediate School Grade Report

SCHOOL	5	6	TOTAL	CAPACITY	UTILIZATION	ED	%ED
CYPRESS GROVE	389	390	779			297	38.1%
IS #3	288	243	531			185	34.8%
OAKWOOD	304	313	617			212	34.4%
TOTAL	981	946	1,927			694	36.0%

COLLEGE STATION ISD

Plan 1 Intermediate School Forecast Report

SCHOOL	2015/16	2016/17	2017/18	2018/19	2019/20	2020/21	2021/22	2022/23	2023/24	2024/25	2025/26
CYPRESS GROVE	779	764	796	863	879	869	865	879	884	891	879
IS #3	531	568	622	697	717	731	739	781	804	834	837
OAKWOOD	617	648	696	715	750	733	729	730	745	759	765
TOTAL	1,927	1,980	2,114	2,275	2,346	2,333	2,333	2,390	2,433	2,484	2,481

COLLEGE STATION ISD

Plan 1 Middle School Grade Report

SCHOOL	7	8	7TH-8TH	CAPACITY	UTILIZATION	ED	%ED
A&M CONSOLIDATED	314	295	609			219	36.0%
COLLEGE STATION	376	358	734			254	34.6%
MS #3	251	226	477			144	30.2%
TOTAL	941	879	1,820			617	33.9%

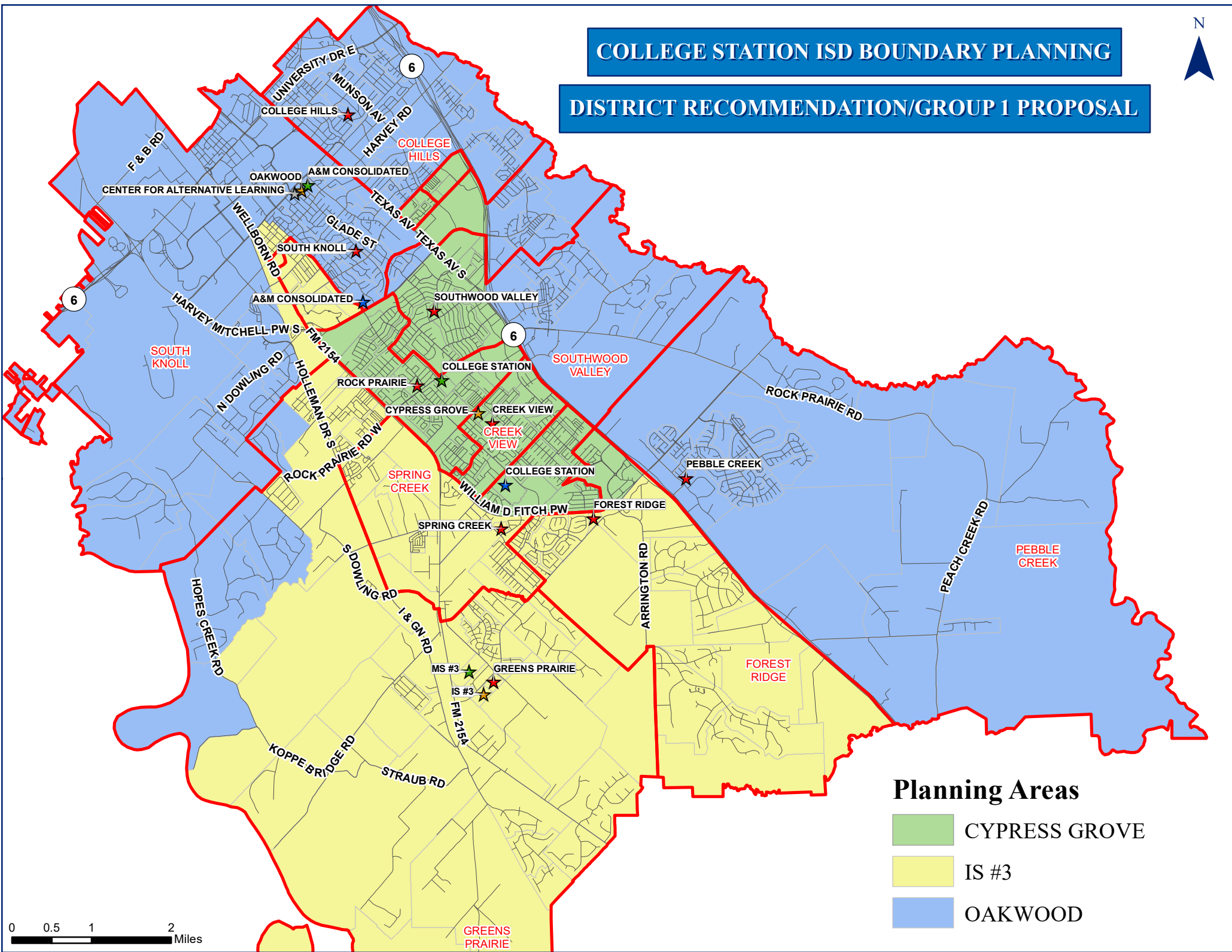
COLLEGE STATION ISD

Plan 1 Middle School Forecast Report (7-8)

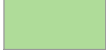

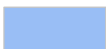
SCHOOL	2015/16	2016/17	2017/18	2018/19	2019/20	2020/21	2021/22	2022/23	2023/24	2024/25	2025/26
A&M CONSOLIDATED	609	643	674	710	746	783	833	806	796	808	810
COLLEGE STATION	734	743	770	806	855	929	951	943	935	950	956
MS #3	477	522	590	622	690	776	791	802	822	864	889
TOTAL	1,820	1,908	2,034	2,138	2,291	2,488	2,575	2,551	2,553	2,622	2,655

COLLEGE STATION ISD BOUNDARY PLANNING

DISTRICT RECOMMENDATION/GROUP 1 PROPOSAL



Planning Areas

-  CYPRESS GROVE
-  IS #3
-  OAKWOOD



COLLEGE STATION ISD

District Recommendation/Group 1 Intermediate School Grade Report

SCHOOL	5	6	TOTAL	CAPACITY	UTILIZATION	ED	%ED
CYPRESS GROVE	389	390	779	920	84.7%	297	38.1%
IS #3	288	243	531	925	57.4%	185	34.8%
OAKWOOD	304	313	617	920	67.1%	212	34.4%
TOTAL	981	946	1,927	2,765	69.7%	694	36.0%

COLLEGE STATION ISD

District Recommendation/Group 1 Intermediate School Forecast Report

SCHOOL	2015/16	2016/17	2017/18	2018/19	2019/20	2020/21	2021/22	2022/23	2023/24	2024/25	2025/26
CYPRESS GROVE	779	764	796	863	879	869	865	879	884	891	879
IS #3	531	568	622	697	717	731	739	781	804	834	837
OAKWOOD	617	648	696	715	750	733	729	730	745	759	765
TOTAL	1,927	1,980	2,114	2,275	2,346	2,333	2,333	2,390	2,433	2,484	2,481

COLLEGE STATION ISD

District Recommendation/Group 1 Middle School Grade Report

SCHOOL	6	7	8	6TH-7TH	7TH-8TH	CAPACITY	UTILIZATION	ED	%ED
A&M CONSOLIDATED	313	314	295	627	609	920	66.2%	219	36.0%
COLLEGE STATION	390	376	358	766	734	940	78.1%	254	34.6%
MS #3	243	251	226	494	477	925	51.6%	144	30.2%
TOTAL	946	941	879	1,887	1,820	2,785	65.4%	617	33.9%

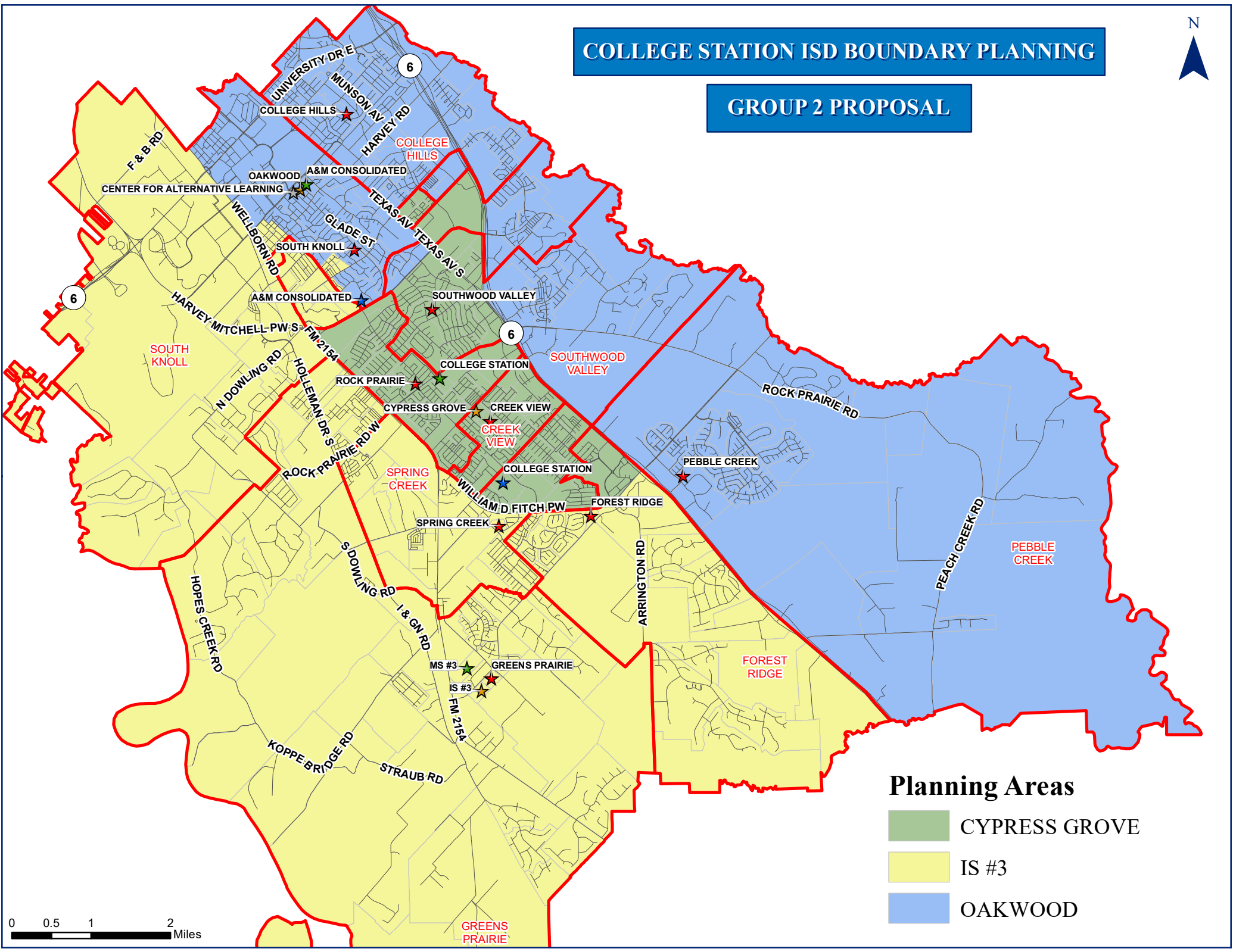
COLLEGE STATION ISD

District Recommendation/Group 1 Middle School Forecast Report (7-8)

SCHOOL	2015/16	2016/17	2017/18	2018/19	2019/20	2020/21	2021/22	2022/23	2023/24	2024/25	2025/26
A&M CONSOLIDATED	609	625	663	693	744	779	837	803	794	806	808
COLLEGE STATION	734	715	731	772	803	865	886	876	871	885	893
MS #3	477	537	612	647	742	835	852	862	882	926	945
TOTAL	1,820	1,877	2,006	2,112	2,289	2,479	2,575	2,541	2,547	2,617	2,646

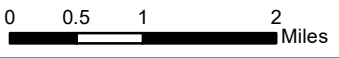
COLLEGE STATION ISD BOUNDARY PLANNING

GROUP 2 PROPOSAL



Planning Areas

- CYPRESS GROVE
- IS #3
- OAKWOOD



COLLEGE STATION ISD

Group 2 Intermediate School Grade Report

SCHOOL	5	6	TOTAL	CAPACITY	UTILIZATION	ED	%ED
CYPRESS GROVE	372	369	741	920	80.5%	260	35.1%
IS #3	307	275	582	925	62.9%	212	36.4%
OAKWOOD	302	302	604	920	65.7%	222	36.8%
TOTAL	981	946	1,927	2,765	69.7%	694	36.0%

COLLEGE STATION ISD

Group 2 Intermediate School Forecast Report

SCHOOL	2015/16	2016/17	2017/18	2018/19	2019/20	2020/21	2021/22	2022/23	2023/24	2024/25	2025/26
CYPRESS GROVE	741	755	786	853	868	859	855	870	875	882	870
IS #3	582	620	677	753	776	788	794	835	858	888	890
OAKWOOD	604	605	651	669	702	686	684	685	700	714	721
TOTAL	1,927	1,980	2,114	2,275	2,346	2,333	2,333	2,390	2,433	2,484	2,481

COLLEGE STATION ISD

Group 2 Middle School / Junior High Grade Report

SCHOOL	6	7	8	6TH-7TH	7TH-8TH	CAPACITY	UTILIZATION	ED	%ED
A&M CONSOLIDATED	301	293	275	594	568	920	61.7%	204	35.9%
COLLEGE STATION	370	365	345	735	710	940	75.5%	233	32.8%
MS #3	275	283	259	558	542	925	58.6%	180	33.2%
TOTAL	946	941	879	1,887	1,820	2,785	65.4%	617	33.9%

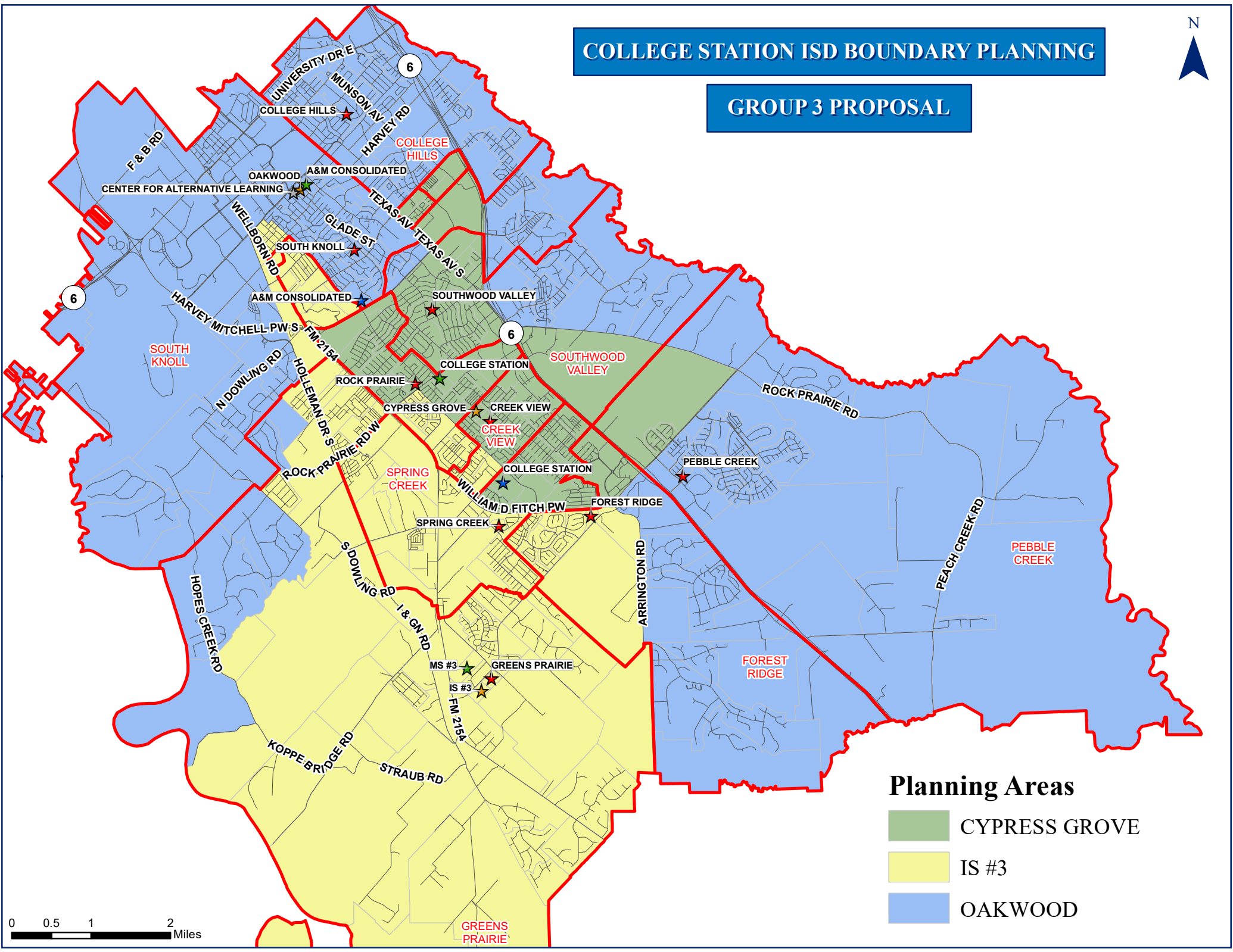
COLLEGE STATION ISD

Group 2 Middle School / Junior High Forecast Report (7-8)

SCHOOL	2015/16	2016/17	2017/18	2018/19	2019/20	2020/21	2021/22	2022/23	2023/24	2024/25	2025/26
A&M CONSOLIDATED	568	563	599	625	671	704	756	728	721	733	735
COLLEGE STATION	710	712	728	769	800	862	883	873	868	882	890
MS #3	542	602	679	718	818	913	936	940	958	1,002	1,021
TOTAL	1,820	1,877	2,006	2,112	2,289	2,479	2,575	2,541	2,547	2,617	2,646

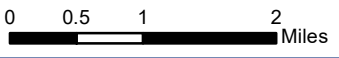
COLLEGE STATION ISD BOUNDARY PLANNING

GROUP 3 PROPOSAL



Planning Areas

- CYPRESS GROVE
- IS #3
- OAKWOOD



COLLEGE STATION ISD

Group 3 Intermediate School Grade Report

SCHOOL	5	6	TOTAL	CAPACITY	UTILIZATION	ED	%ED
CYPRESS GROVE	359	360	719	920	78.2%	271	37.7%
IS #3	298	254	552	925	59.7%	210	38.0%
OAKWOOD	324	332	656	920	71.3%	213	32.5%
TOTAL	981	946	1,927	2,765	69.7%	694	36.0%

COLLEGE STATION ISD

Group 3 Intermediate School Forecast Report

SCHOOL	2015/16	2016/17	2017/18	2018/19	2019/20	2020/21	2021/22	2022/23	2023/24	2024/25	2025/26
CYPRESS GROVE	719	705	736	794	810	797	790	801	805	811	800
IS #3	552	589	643	720	742	757	767	807	831	862	864
OAKWOOD	656	686	735	761	794	779	776	782	797	811	817
TOTAL	1,927	1,980	2,114	2,275	2,346	2,333	2,333	2,390	2,433	2,484	2,481

COLLEGE STATION ISD

Group 3 Middle School / Junior High Grade Report

SCHOOL	6	7	8	6TH-7TH	7TH-8TH	CAPACITY	UTILIZATION	ED	%ED
A&M CONSOLIDATED	332	337	321	669	658	920	71.5%	220	33.4%
COLLEGE STATION	360	347	327	707	674	940	71.7%	231	34.3%
MS #3	254	257	231	511	488	925	52.8%	166	34.0%
TOTAL	946	941	879	1,887	1,820	2,785	65.4%	617	33.9%

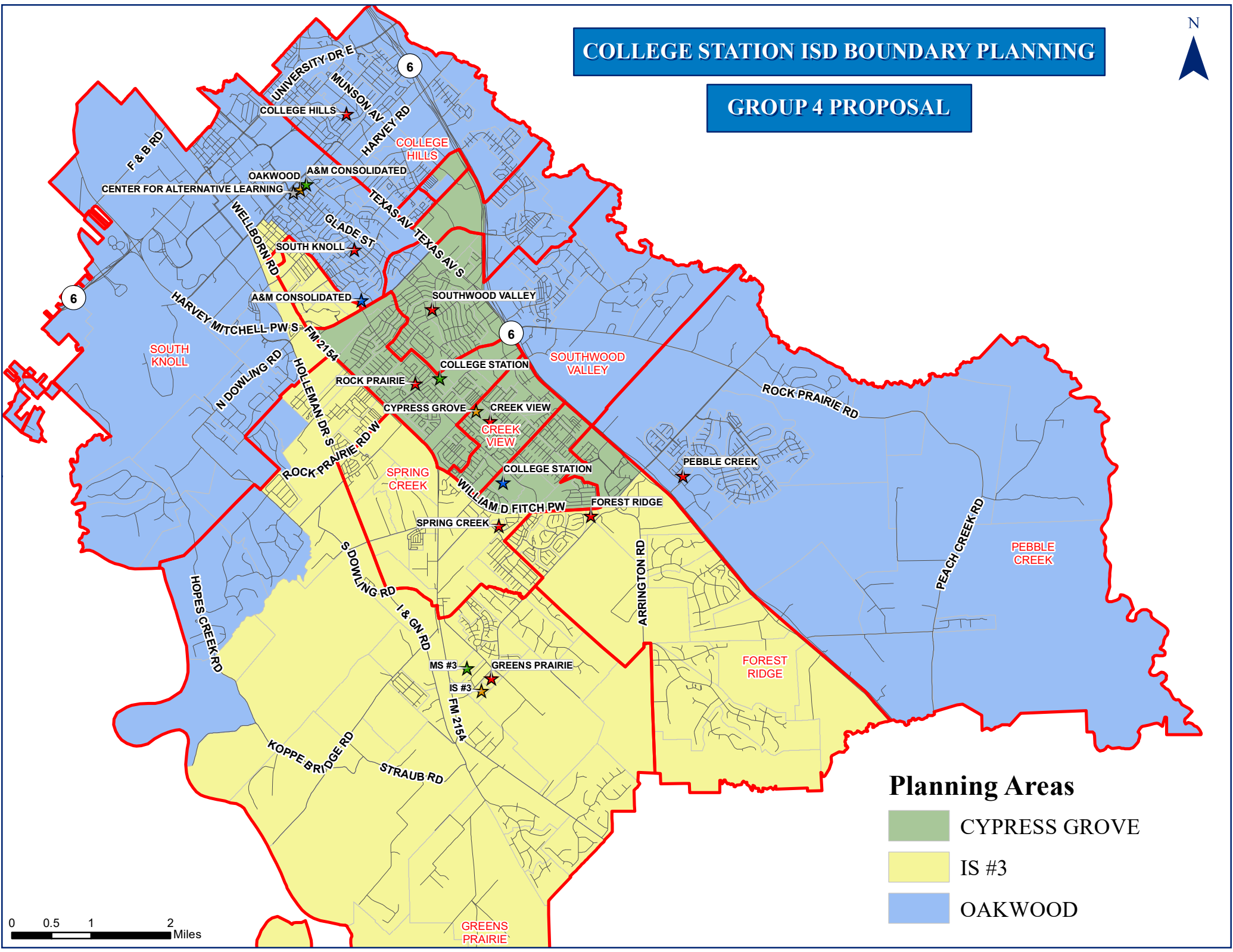
COLLEGE STATION ISD

Group 3 Middle School / Junior High Forecast Report (7-8)

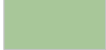

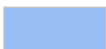
SCHOOL	2015/16	2016/17	2017/18	2018/19	2019/20	2020/21	2021/22	2022/23	2023/24	2024/25	2025/26
A&M CONSOLIDATED	658	677	719	754	809	853	912	878	869	883	885
COLLEGE STATION	674	655	672	707	737	793	811	802	797	809	815
MS #3	488	545	615	651	743	833	852	861	881	925	946
TOTAL	1,820	1,877	2,006	2,112	2,289	2,479	2,575	2,541	2,547	2,617	2,646

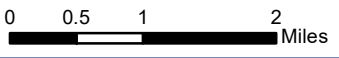
COLLEGE STATION ISD BOUNDARY PLANNING

GROUP 4 PROPOSAL



Planning Areas

-  CYPRESS GROVE
-  IS #3
-  OAKWOOD



COLLEGE STATION ISD

Group 4 Intermediate School Grade Report

SCHOOL	5	6	TOTAL	CAPACITY	UTILIZATION	ED	%ED
CYPRESS GROVE	370	371	741	920	80.5%	265	35.8%
IS #3	288	243	531	925	57.4%	185	34.8%
OAKWOOD	323	332	655	920	71.2%	244	37.3%
TOTAL	981	946	1,927	2,765	69.7%	694	36.0%

COLLEGE STATION ISD

Group 4 Intermediate School Forecast Report

SCHOOL	2015/16	2016/17	2017/18	2018/19	2019/20	2020/21	2021/22	2022/23	2023/24	2024/25	2025/26
CYPRESS GROVE	741	725	754	820	834	826	822	838	843	850	839
IS #3	531	568	622	697	717	731	739	781	804	834	837
OAKWOOD	655	687	738	758	795	776	772	771	786	800	805
TOTAL	1,927	1,980	2,114	2,275	2,346	2,333	2,333	2,390	2,433	2,484	2,481

COLLEGE STATION ISD

Group 4 Middle School / Junior High Grade Report

SCHOOL	6	7	8	6TH-7TH	7TH-8TH	CAPACITY	UTILIZATION	ED	%ED
A&M CONSOLIDATED	332	334	304	666	638	920	69.3%	244	38.2%
COLLEGE STATION	371	356	349	727	705	940	75.0%	229	32.5%
MS #3	243	251	226	494	477	925	51.6%	144	30.2%
TOTAL	946	941	879	1,887	1,820	2,785	65.4%	617	33.9%

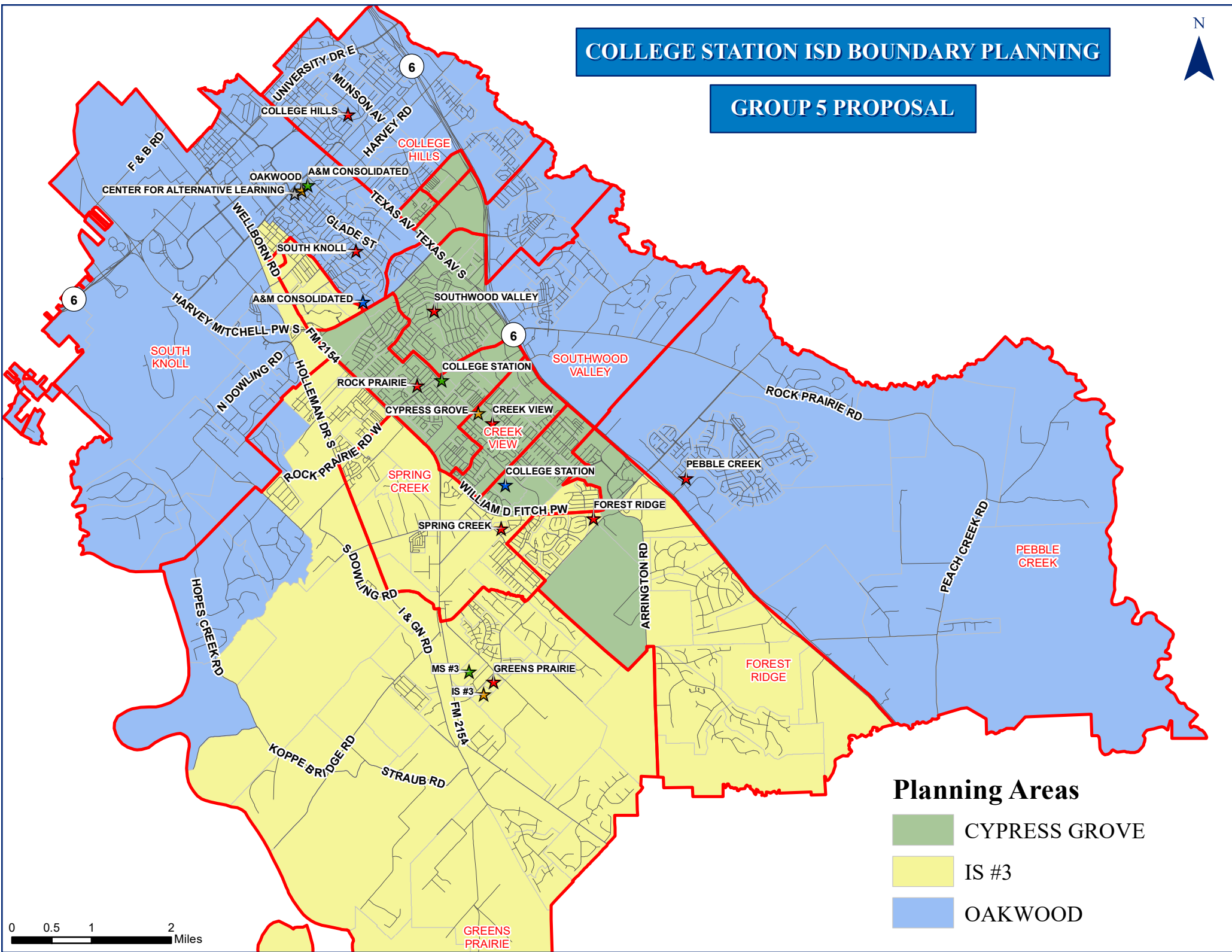
COLLEGE STATION ISD

Group 4 Middle School / Junior High Forecast Report (7-8)

SCHOOL	2015/16	2016/17	2017/18	2018/19	2019/20	2020/21	2021/22	2022/23	2023/24	2024/25	2025/26
MS #3	477	537	612	647	742	835	852	862	882	926	945
COLLEGE STATION	705	686	701	741	772	832	852	843	838	851	859
A&M CONSOLIDATED	638	654	693	724	775	812	871	836	827	840	842
TOTAL	1,820	1,877	2,006	2,112	2,289	2,479	2,575	2,541	2,547	2,617	2,646

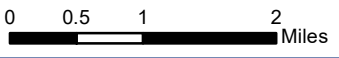
COLLEGE STATION ISD BOUNDARY PLANNING

GROUP 5 PROPOSAL



Planning Areas

- CYPRESS GROVE
- IS #3
- OAKWOOD



COLLEGE STATION ISD

Plan 5 Intermediate School Grade Report

SCHOOL	5	6	TOTAL	CAPACITY	UTILIZATION	ED	%ED
CYPRESS GROVE	382	378	760	920	82.6%	294	38.7%
IS #3	295	255	550	925	59.5%	188	34.2%
OAKWOOD	304	313	617	920	67.1%	212	34.4%
TOTAL	981	946	1,927	2,765	69.7%	694	36.0%

COLLEGE STATION ISD

Group 5 Intermediate School Forecast Report

SCHOOL	2015/16	2016/17	2017/18	2018/19	2019/20	2020/21	2021/22	2022/23	2023/24	2024/25	2025/26
CYPRESS GROVE	760	745	777	841	857	847	846	864	875	890	884
IS #3	550	587	641	719	739	753	758	796	813	835	832
OAKWOOD	617	648	696	715	750	733	729	730	745	759	765
TOTAL	1,927	1,980	2,114	2,275	2,346	2,333	2,333	2,390	2,433	2,484	2,481

COLLEGE STATION ISD

Group 5 Middle School / Junior High Grade Report

SCHOOL	6	7	8	6TH-7TH	7TH-8TH	CAPACITY	UTILIZATION	ED	%ED
A&M CONSOLIDATED	313	314	295	627	609	920	66.2%	219	36.0%
COLLEGE STATION	378	371	340	749	711	940	75.6%	253	35.6%
MS #3	255	256	244	511	500	925	54.1%	145	29.0%
TOTAL	946	941	879	1,887	1,820	2,785	65.4%	617	33.9%

COLLEGE STATION ISD

Group 5 Middle School / Junior High Forecast Report (7-8)

SCHOOL	2015/16	2016/17	2017/18	2018/19	2019/20	2020/21	2021/22	2022/23	2023/24	2024/25	2025/26
A&M CONSOLIDATED	609	625	663	693	744	779	837	803	794	806	808
COLLEGE STATION	711	692	708	747	779	838	863	857	861	884	900
MS #3	500	560	635	672	766	862	875	881	892	927	938
TOTAL	1,820	1,877	2,006	2,112	2,289	2,479	2,575	2,541	2,547	2,617	2,646